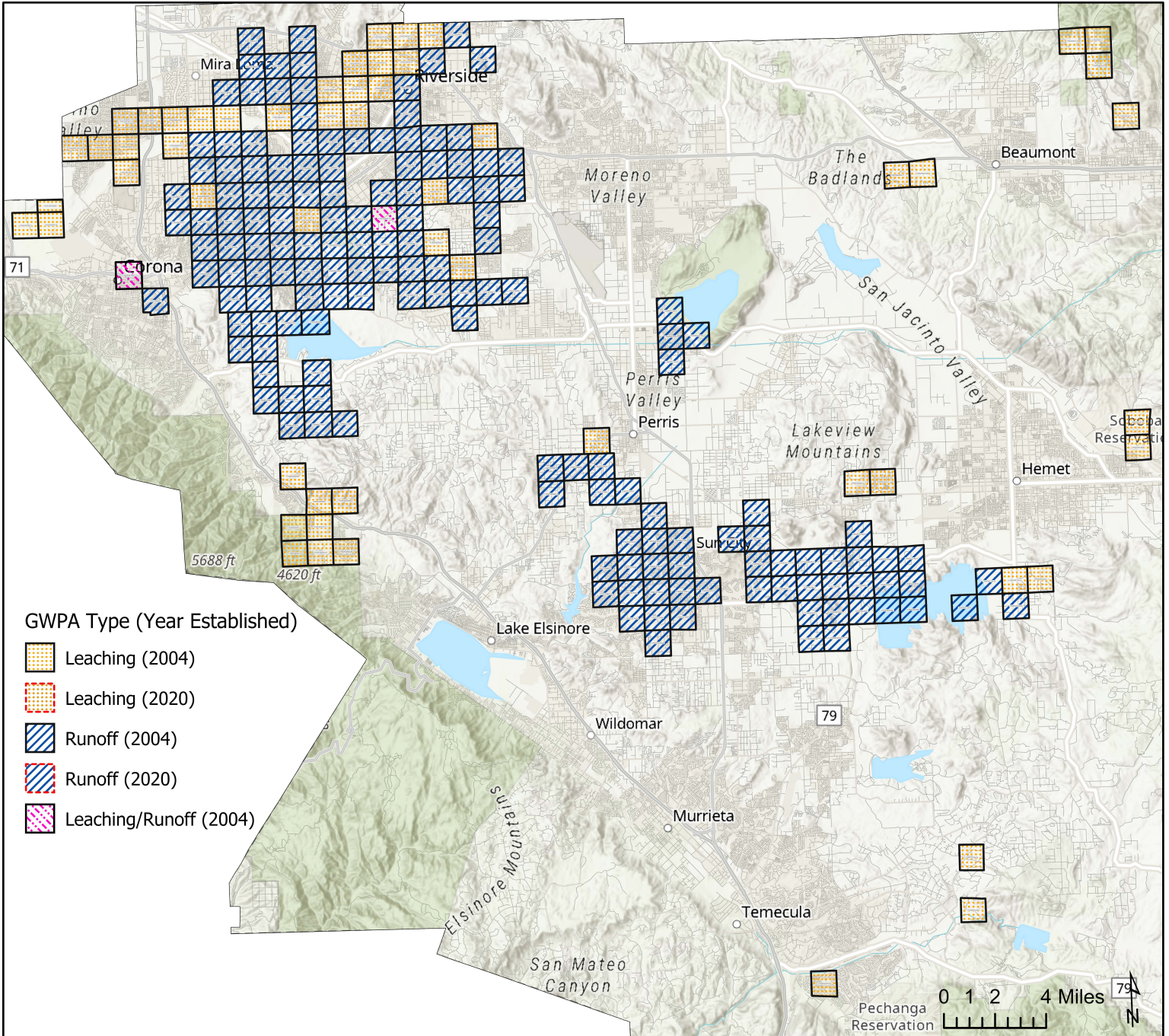


Riverside County

Ground Water Protection Areas

January 2020



dpr This map is for reference only. To confirm whether or not the property you are treating is located within a Ground Water Protection Area, please check with the County Agricultural Commissioner's office.

Sources: Esri, Airbus DS, USGS, NGA, NASA, CGIAR, N Robinson, NCEAS, NLS, OS, NMA, Geodastystrelsen, Rijkswaterstaat, GSA, Geoland, FEMA, Intermap and the GIS user community, Sources: Esri, HERE, Garmin, FAO, NOAA, USGS, © OpenStreetMap contributors, and the GIS User Community